



March 2008

AWA News

Association for Washington Archaeology

Volume 12, Number 1

President's Message

Happy Spring!

AWA now has a new web address at www.washingtonarchaeology.com. We want to thank Pat McCutcheon for hosting the website on his school webpage for so long!! At this point, the website content remains the same, but the board is in discussion with our webmaster about proposed changes. Please contact me if you have ideas or suggestions for information and features you would like to see on the website.

It is looking to be a busy next couple of months, with several conferences to attend. At the SAA meeting in Vancouver, BC, AWA is serving as co-sponsor (with the British Columbia Association of Professional Archaeologists) of the Council of Councils meeting. Although AWA usually sponsors a member to attend the meeting, the board decided that this year we would instead take our turn at paying for very expensive coffee. The Council of Council meetings are for representatives of the professional archaeological association of each state. The meeting is an opportunity for the states to discuss pertinent issues ranging from increasing membership to specific high-profile archaeological projects.

At the 2008 NW Anthropological Conference, AWA will again hold our annual meeting, and will have a table setup to sign up new members, allow old members to renew membership, and sell extra copies of our journals. So please stop by and renew!! In addition, we are sponsoring a student workshop on lithic identification by AWA board member Scott Williams. However, attendance is not limited to students, so feel free to attend and pass the word to anyone that could benefit from learning about lithics. I hope to see you all at the conference!!

Tom Becker
AWA President

Inside this issue:

<i>Have You Renewed?</i>	2
<i>AWA Journal: Call for Submissions</i>	2
<i>Lost Members?</i>	2
<i>The SAA & a Canadian Party</i>	3
<i>Communications from DAHP</i>	3
<i>Lithic Workshop</i>	3
<i>AWA Student Research Grant</i>	4
<i>Archaeological Prospection Workshop</i>	4
<i>NW Featured in SAA Symposium</i>	4
<i>Update on Grave Legislation</i>	5
<i>Events Calendar</i>	5
<i>Olcott Site Under Investigation</i>	6
<i>PSU Lecture Series</i>	6
<i>Saddle Mountains Field School</i>	7
<i>SPSCC 2008 Field School</i>	8
<i>SPSCC Field School Application</i>	9
<i>Wenas Mammoth Field School</i>	10
<i>Transportation Archaeologist Opening</i>	11

AWA News

AWA News is published March, June,
September, and December
by the

Association for Washington Archaeology,
c/o Curator of Archaeology
Burke Museum
Box 35-3010, UW
Seattle, WA 98195-3010

OFFICERS & EDITORS

President

Tom Becker beckertom@comcast.net

Vice President

Gary Wessen gwessen@aol.com

Treasurer

Mary Rossi mkrossi@eppardvision.org

Secretary

Doug Tingwall palaios@earthlink.net

Directors-at-Large

1) Robert Kopperl rkopperl@northwestarch.com

2) Scott Williams Scott.williams2@wa.usda.gov

3) Jackie Cooke camus@bigdam.net

Journal Editor

Patrick Lubinski Lubinski@cwu.edu

Newsletter Editor

Nancy Kenmotsu nkenmotsu@geo-marine.com

Newsletter Policies

AWA does not review or evaluate the literature in its newsletter, though manuscripts may be edited for length and format. The views expressed herein are those of the author(s) and not necessarily those of AWA, its Board of Directors, staff, or the editor.

It is assumed that articles reporting on any aspect of a project under contract have been submitted in accordance with the provisions of the contract and with the knowledge and permission of the project's PI.

Submission deadlines are the 1st of March, June, September, and December. We welcome any relevant submissions. Please send them to the Editor via email.

Have You Renewed?

If you have not already done so, renew your membership for 2008 by mail using the form on the back of this newsletter or go to the new AWA website (see President's Message, page 1). Your mailing label indicates the last year for which your dues are paid.

You may pay for multiple years at once if you wish, just be sure to note that on your form. If you are renewing and check the "Address Unchanged" box, you need not write in your address. Please remember to keep your email address current; send a message to the Secretary and Treasurer if you have a change. Thanks for your support!

AWA Journal: Call for Submissions

Archaeology in Washington is seeking submissions. Your help is critical to its success! We will consider articles based on contracted reports, independent work, literature reviews, short field or lab projects, student projects, conference presentations, and other work relevant to Washington archaeology. We will also consider monographs (e.g., reports, student theses), and book reviews. If you have an idea for a contribution, or are willing to act as a manuscript reviewer, please contact Editor Pat Lubinski (Lubinski@cwu.edu). Submissions for Volume 13 are due to the Editor by February 15, 2008. Please help to continue this important component of the Association for Washington Archaeology!

Lost Members?

We have lost touch with several members. Please contact Mary Rossi at mkrossi@eppardvision.org if you know where these members are:

Jason Dabling
Danielle Gembala
Walter Harper
Megan Herkelrath

The AWA website is at <http://www.washingtonarchaeology.com>

The SAA and a Canadian Party

— Submitted by Dana Lepofsky

It's time to make your reservations for the SAA in Vancouver, B.C. this coming March. The SAA will hold their annual meeting March 26-30, 2008 at the Vancouver Convention and Exhibition Centre. Registration, meeting details, and hotel information are all on the website at: <http://www.saa.org/meetings/hotel.html>. Hopefully AWA will be well-represented at this important conference.

To make AWA members feel at home, the Canadian Archaeological Community is hosting a party on 28 March, 2008 in Vancouver, and you're all invited. As you will see from the link below, the event is timed to coincide with the Society for American Archaeology meetings (the SAA's) which are also being held in Vancouver (or maybe, the SAA's are timed to coincide with our party...). To reserve a space, go to: http://www.anth.ubc.ca/CAA_Reception.11227.0.html

There are only limited spaces, so if you want to join in the fun, you'll have to reserve your spot. We'll be checking names at the door. If you register and then later decide not to come, please "de-register" your name so that it will free up a spot for someone else.

Looking forward to celebrating Canadian archaeology and archaeologists with ya'll.

—Dana Lepofsky and Andrew Martindale [*Editor's note: remember your passports or birth certificates for the border!*]

Communications from DAHP

—submitted by Stephenie Kramer

Recently the topic of an impending curation crisis in Washington State has been introduced in discussions at the Curation Summit and elsewhere. However, in order to determine solutions for such a crisis, the first step is to quantify the situation. In conjunction with the Curation Summit, DAHP is seeking to enumerate the volume of archaeological collections housed in non-curatorial facilities. To accomplish this, we have created an anonymous web-based survey. The goal of the survey is to assess the need for additional curation space, and to identify reasons collections may not be curated (e.g., lack of space or funding, or the collection is still being analyzed, etc.). The survey is not intended as a regulatory action or a way to "check" on who has collections! Again, the survey is anonymous unless you choose to leave your name, and it should only take a few minutes. Thank you in advance for your assistance. Results will be shared at a later time. The link to the survey can be found on DAHP's website: www.dahp.wa.gov.

AWA Sponsored Lithic Workshop at 2008 NWAC

—submitted by Scott Williams

AWA will be holding a workshop at the 2008 NWAC in Victoria on lithic technology. This will be a hands-on workshop directed at students and professionals, and will focus on identifying and working through typical "problem" areas often encountered when working with lithics. Topics that will be addressed will include appropriate sample sizes, poor or unusual raw materials that make identification difficult, use wear versus non-cultural edge damage, and methods to analyze large debitage collections. Case studies and sample artifacts will be used, and participants are encouraged to bring examples or "horror stories" of their own to be addressed. The workshop will be led by Scott Williams of DAHP, with assistance from other lithic specialists. The goal of the workshop will be to make participants aware of some of the issues and strategies for dealing with lithic artifacts, rather than trying to teach people how to "do" lithic analysis. If you have any questions on the workshop, please contact Scott Williams at (360) 586-3088 or scott.williams@dahp.wa.gov. We'd like to encourage all members to let their students and crew members know about the workshop, so please pass share this info with anyone who might want to attend.

AWA Student Research Grant

Every year the AWA offers a student research grant for up to \$500. The AWA student research grant recipient will be announced at the 2008 NWAC conference in Victoria, B.C. Applications will be accepted until April 1, 2008.

Please encourage students conducting archaeological research relevant to Washington state to apply.

For more details, check out the AWA website at <http://www.washingtonarchaeology.com/events.html>.

Applications should be sent to :

Tom Becker

Association for Washington Archaeology

PO BOX 1455

Portland, OR 97207

National Park Service's 2008 Archaeological Prospection Workshop

The National Park Service's 2008 workshop on archaeological prospection techniques entitled *Current Archaeological Prospection Advances for Non-Destructive Investigations in the 21st Century* will be held May 19-23, 2008, at the Kelly Inn, Fargo, North Dakota. Lodging will be at the Best Western Kelly Inn with the meeting room at O'Kelly Event Center at the Kelly Inn. The field exercises will take place at the Biesterfeldt Site (a protohistoric village site on the Sheyenne River).

Co-sponsors for the workshop include the National Park Service, the Archaeological Conservancy, Minnesota State University-Moorhead, and the State Historical Society of North Dakota. This will be the eighteenth year of the workshop dedicated to the use of geophysical, aerial photography, and other remote sensing methods as they apply to the identification, evaluation, conservation, and protection of archaeological resources across this Nation. The workshop will present lectures on the theory of operation, methodology, processing, and interpretation with on-hands use of the equipment in the field. The workshop this year will have a special focus on the soil magnetism and on the effects of plowing on geophysical signatures and site integrity. There is a tuition charge of \$475.00. Application forms are available on the Midwest Archeological Center's web page at <http://www.cr.nps.gov/mwac/>. For further information, please contact Steven L. DeVore, Archeologist, National Park Service, Midwest Archeological Center, Federal Building, Room 474, 100 Centennial Mall North, Lincoln, Nebraska 68508-3873: tel: (402) 437-5392, ext. 141; fax: (402) 437-5098; email: <steve_de_vore@nps.gov>.

NW Featured in SAA Symposia

Lots of interesting symposia & poster sessions at the upcoming SAAs feature the archaeology of the NW. Here are a few to wet your appetite: *Something for Everyone: Approaches to Collaboration with Native American and First Nations Communities* (opening session); *Interaction and Identity among the Sto:lo Salish of the Lower Frasier River Watershed, SW BC*; *Static Abundance or Abundant Static? A Re-Examination of Archaeological and Paleoenvironmental Complexity in Western Washington*; *Contact Era Archaeology of the Lower Columbia Valley*; *Japan and NW Coast (US/Can) Wet Site Connections: Comparing Basketry, Maco-Flora/Fauna, Woodworking, Non-Perishables*; *Settlement Patterns and Features in the Pacific Northwest*.

Others are also among the listings. And, of course, there are other great sessions for those doing archaeological research in other regions or countries.

As reported in the last Newsletter, the State Legislature is considering proposed legislation regarding grave/cemetery protection. The House passed E2SHB2624 (Engrossed Second Substitute House Bill) on February 15. Right now (literally), the Senate Committee on Government Operations & Elections is holding a public hearing on the bill. The companion bill on the Senate side is SSB6521 (Substitute Senate Bill), and it was referred to Ways & Means on February 7. People who wish to follow the progress can go to <http://apps.leg.wa.gov/billinfo/> and enter the bill number(s) for the latest news.

Events Calendar

Suquamish Renewal Pow Wow — March 28th, 29th, and 30th: Suquamish Tribal Gym, Sandy Hook Rd., Poulsbo, WA
Host Drums: White Lodge Singers, Mandaree, ND; Porcupine Singers, Porcupine, SD; MC: Antone George HeadMan; Larry Cordier; HeadLady: Alexis George; Arena Director: Steve Old Coyote. For information: Old Coyote (360)394-8509.

The Northwest Anthropological Conference is being held April 23-26, 2008 in Victoria, British Columbia. For more information, check out the host website at <http://nwac.2008.googlepages.com/>. See also News from DAHP, this Newsletter.

A joint conference between the Washington Trust for Historic Preservation and the Planning Association of Washington will be held at Campbell's Resort in Chelan April 30 and May 1, 2008. The theme of the conference is "Power of Place." For more information email greg.griffith@dahp.wa.gov.

The 2008 Archaeological Prospection Workshop, entitled *Current Archaeological Prospection Advances for Non-Destructive Investigations in the 21st Century*, will be held May 19-23, 2008, in Fargo, North Dakota. See details on page 5.

Section 106 Essentials, a two-day course on the requirements for Section 106 of the National Historic Preservation Act will be offered by the Advisory Council on Historic Preservation in Seattle. Dates are August 26-27, 2008. For more information and registration, go to www.achp.gov/106. Contact: Cindy Bienvenue, 202-606-8521.

For those with interests in the Great Basin - The 31st Great Basin Anthropological Conference will be held October 8-11, 2008 in Portland, Oregon. For more information, check out the host website at <http://gbac.whsites.net/>.

Plains Anthropology's annual meeting will be held in Rapid City, South Dakota, October 10-13, 2008, Holiday Inn Convention Center, Rapid City. For more information go to: <http://www.ou.edu/cas/archsur/plainsanth/meeting/meeting.htm>.

The Society for American Archaeology Annual Meeting in 2009 will be held April 22-26 in Atlanta, Georgia. Make your plans accordingly. Check out the SAA website at www.saa.org.

Olcott Complex Site Under Investigation

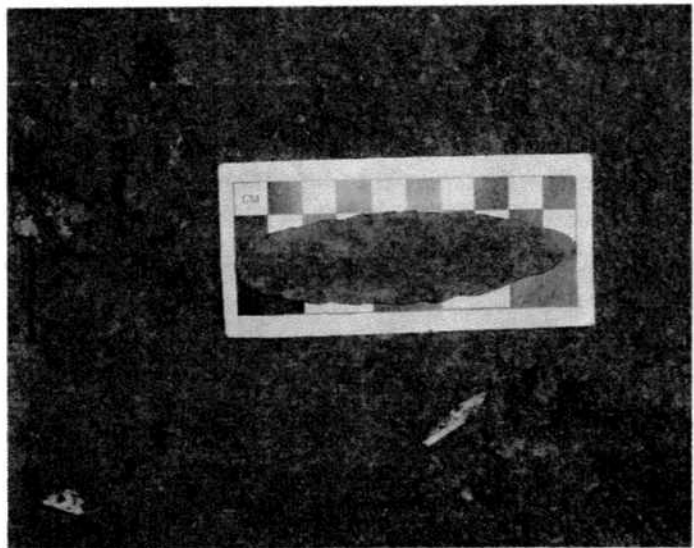
— submitted by Garth Baldwin

Drayton Archaeological Research (DAR) is investigating an Olcott complex site (45SN417) as part of a residential development in Snohomish County. Old growth stumps are still present on the property and it appears the site was cleared once then left to reforest. There is a conspicuous lack of obvious landform alteration (e.g. farming, settlement), and bioturbation from plant and tree growth may be the single concern for cultural deposit integrity. The archaeological site covers a large portion of the total 35.19 acre site. A report was completed in September 2007, and an application to undertake further testing was submitted to the Department of Archaeology and Historic Preservation (DAHP) in January 2008. DAR is awaiting issuance or/and comments on the permit.

Cultural materials were encountered in 28 of the 53 total probes. Artifacts located during the survey are consistent with other Olcott complex assemblages in the area and throughout western Washington. The key artifacts located by DAR include a complete Cascade point, numerous biface fragments large cobble industry flakes and cores and fire modified rock. All materials exhibited heavy chemical weathering.

The site is located on a small centralized plain area between two extinct watercourses in second growth forest. Artifacts are consistently located within two 'B' soil horizons, overlying a poorly sorted cobble and sand layer. The site area covers about 13 acres or approximately 51,000 square meters. The average depth of cultural materials is about 50 cm. These numbers, used a basis for calculating volume, result in an estimated 25,500 cubic meters of culture bearing soil at 45SN417. Data collected from the site will be applied to artifact distribution analysis combined with the reduction techniques of the particular stone tool technology. The site may yield data illustrating tool use and manufacture, site organization and add to the knowledge of Olcott assemblages from the Northwest Coast. As always questions, comments and (some) advice are welcomed; and if interested please contact DAR to arrange a field visit— or volunteer time.

Photo of the Cascade point found at surveyor's stake in the proposed cul-de-sac for the development.



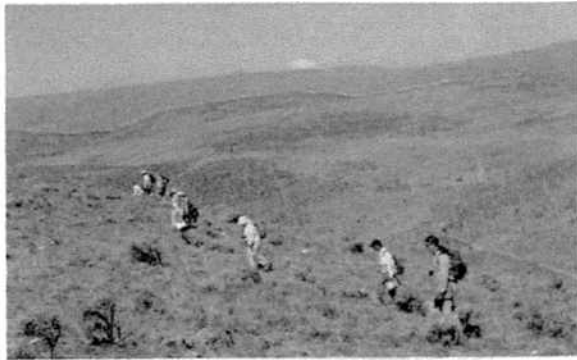
PSU Lecture Series

— submitted by Tom Becker

PSU has a lecture series, many of which are on sites in Washington - contact Virginia Butler, butlerv@pdx.edu, for details. Go to: http://www.anthropology.pdx.edu/news_events/First%20Thursdays%2007-08.htm.

CWU Saddle Mountains and Wenas Creek 2008 Field School in CRM Archaeology

Department of Anthropology, Central Washington University, Ellensburg



Saddle Mountains Survey, Bureau of Land Management



Lower Wenas Creek Survey, Bureau of Reclamation

THE PLACE: The Saddle Mountains are a rugged sagebrush grassland area in east/Central Washington, where the hills and mountains rise about 2200 feet above the Columbia and Yakima Rivers. The Lower Wenas Creek is in the lowlands of Central Washington and characterized by gentle upland bluffs situated above a permanent riparian floodplain.

THE SCHOOL: Students will focus on archaeological fieldwork and cultural resource management (CRM), including intensive training in survey (cultural resource inventory) and limited excavation for identifying and mapping archaeological sites. *These are the most common tasks for archaeology jobs.* The project is co-sponsored by the Bureau of Land Management and Bureau of Reclamation.

DATES & CREDITS:

June 16 – August 15, 2008 (9 weeks) * *
Weekdays 7:00 a.m. – 4:00 p.m.
(12 credits, quarter system)

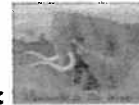
TRANSPORTATION: Provided to and from campus daily.

ROOM AND BOARD/HOUSING: Options are available on and off campus. Please visit the following Web page: www.cwu.edu/~housing/

ENROLLMENT: Enrollment is limited to no more than 20 students.

PREREQUISITES: Permission of instructor and application. Visit Web page at: www.cwu.edu/~anthro/fieldwork/Archy/2008FSA.d.html for downloadable word file application. *Application deadline for priority consideration, April 15, 2008.*

INSTRUCTOR/CONTACT:
Patrick McCutcheon, PhD., Anthropology,
509-963-2075, e-mail: mccutchp@cwu.edu



ADDITIONAL OPPORTUNITY:
During our field school, there will be an opportunity for a one-week exchange with another CWU field school excavating the Wenas Creek Mammoth!

2008 TUITION AND FEES * : Undergraduate: \$1957 Post-baccalaureate: \$2569 Graduate: \$2749

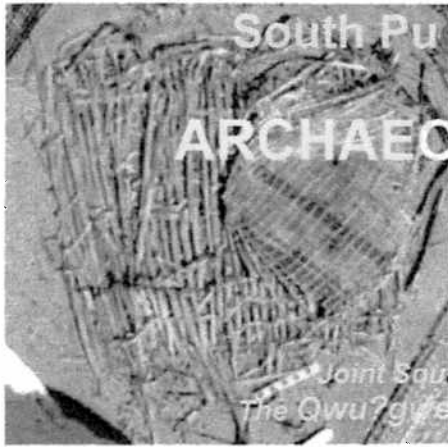
*tuition and fees proposed for 2008 and pending approval by Board of Trustees



CENTRAL WASHINGTON UNIVERSITY

Your future is Central.

Department of Anthropology and Museum * Phone: 509-963-3201
400 E. University Way, Ellensburg, WA 98926-7544
CWU is an AA/EEO/Title IX Institution. TDD 509-963-2143



South Puget Sound Community College

ARCHAEOLOGICAL FIELD SCHOOL

June 23—August 15
SUMMER 2008

Anthropology 280

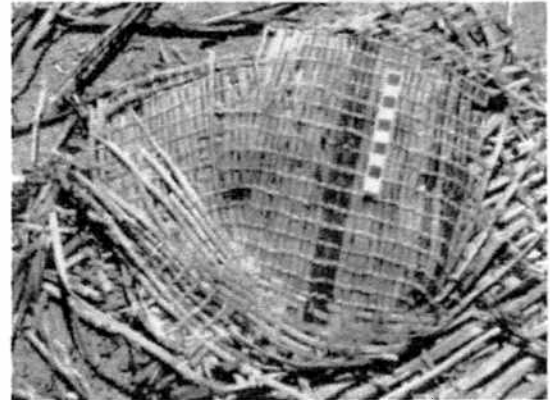
Joint Squaxin Island Tribe/College Investigations
The Qwu?gwe's site, Southern Eld Inlet, Olympia, Washington



Join us at an ancient Squaxin Island Tribe village site where we are conducting a full-scale cultural investigations of a buried waterlogged shell-midden area (with wood and fiber artifact preservation) and a dry shell-midden living area in the ancient dwellings at the site.



Slightly up-bay we are also festing a well preserved ancient fish-trap with over 440 cedar stakes mapped and a historic 1850's homestead.



You will gain invaluable training in full-scale archaeological excavation techniques in recovering cultural materials from a dry shell midden living area, a waterlogged site with preservation of basketry (the large basket with a smaller one found stuck to the bottom (above and center right), was found last summer!), cordage, a cedar bark gill net, shell jewelry, bone tools (center left), ancient toys (below right) and wood working tools (jadite adze bits) and an entire preserved fish trap. You will also gain laboratory experience, including conservation,

analysis, replication, interpretation, photography and illustration of artifacts.



Working as a team with the Squaxin Island Tribe you will also gain invaluable cultural training. The tribe will bring its values and traditions to the project. You will be allowed a glimpse into an ancient culture and past life-ways. Additionally you will be involved in their newly built Squaxin Island Tribe Museum and Library Center (visit <http://www.squaxinland.org>). We also will provide training in heritage site survey procedures and opportunities for overnight field-trips to visit other field projects and museums, including the Makah Museum in Neah Bay, Washington.

The 2007 field season is our 10th year in the scenic, isolated, and privately owned, Qwu?gwe's archaeological site. If you would like to join our one-of-a-kind joint tribal/college field archaeology project please contact us and/or send in the attached application form. Dorm housing is available within a mile of the project area at The Evergreen State College in Olympia (see application form). Also see: <http://www.library.spscc.ctc.edu/crm/crm.htm>



Just under 2 inches long

Toy War Club
approximately 600 years old

Contact the Co-Directors:

Dr. Dale R. Croes
Department of Anthropology
South Puget Sound Community College
dcroes@spscc.ctc.edu
(360) 596-5336

Rhonda Foster, Director
Cultural Resources Department
Squaxin Island Tribe
rfoster@squaxin.nsn.us
(360) 432-3850



Excavating a cedar bark strip 2007

Please Announce
South Puget Sound Community College
ARCHAEOLOGICAL FIELD SCHOOL (Anth 280)
SUMMER 2008
 June 23—August 15

ELIGIBILITY: The course is designed for undergraduates who have had some social and/or natural sciences training and limited to no field experience. Permission by Co-Directors is required and a maximum of 20 students will be accepted. Please send in completed application provided below.

REGISTRATION: South Puget Sound Community College, Anthropology 280: Field Archaeology, 12 Social Science GED credits.

COSTS:

Registration/Anth 280 (12 credits) Resident Washington State: **\$832.14**
 Non-resident (of Washington State) registration **\$963.24**

Field School Laboratory Fee: **\$140.00**

Optional Housing available at Dorms on The Evergreen approx. **\$700.00**
 State College (TESC; approx. 1 mile from project area).

For 8 week field school period (does not include meals—but cooking facilities provided).

To participate in this optional housing, you need to contact Dr. Dale Croes for TESC housing forms.

APPLICATION:

Send to:

Dr. Dale R. Croes, Anthropology, South Puget Sound Community College, 2011 Mottman Road SW, Olympia, WA 98512 or turn into Social Science Division Office/Terry Vernone, Building 22-234.

Name _____

Permanent Address _____

Phone Number (____) _____ e-mail: _____

COURSEWORK/PREVIOUS FIELD/LAB EXPERIENCE Anthropology & Related Courses

Title	Year	Title	Year

SPECIAL OR RELEVANT SKILLS AND ACTIVITIES (photography, cultural studies, first aid, biology, computers, hobbies, carpentry, mechanics, gardening, manual work experience, etc.)

HEALTH STATEMENT (physical restrictions, allergies, special needs)

Year in School _____ Major (if one): _____ Cumulative GPA: _____

Please Provide Two References:

Name: _____ Phone: (____) _____

Name: _____ Phone: (____) _____

On a separate sheet of paper, please attach a **STATEMENT OF PERSONAL INTEREST**

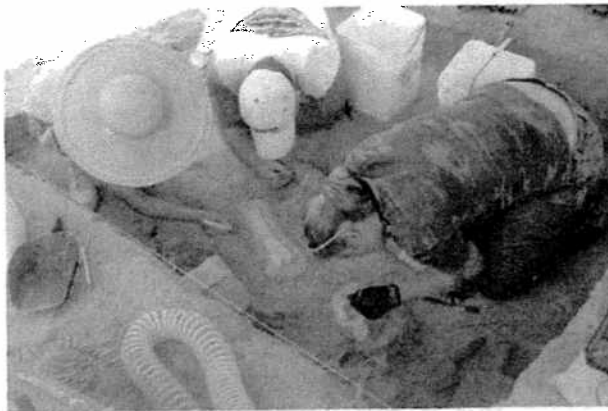
Signature _____ Date _____

INVESTIGATING THE WENAS CREEK MAMMOTH



2008 Summer Field School June 16 – Aug. 8

<http://www.cwu.edu/~masters/mammoth.html>



The Wenas Creek Mammoth Project focuses on the recovery of a late Pleistocene mammoth, associated artifacts and faunas, while placing these in their geological context. We will be using techniques from archaeology, paleontology, and geography in our excavation near Selah, Wash. Come join us!

The field school is open to anyone eligible for college credits (college student or not), and may be audited by those not wanting college credit. Participants will be in the public eye (e.g., public tours, the History's Channel's Journey to 10,000 BC), and may spend up to one week on an exchange field school of archaeological survey. For more detailed information, including tuition scholarships, please visit <http://www.cwu.edu/~masters/mammoth.html>.

DATES:

June 16 – Aug. 8, 2008 (8 weeks)
Weekdays 7 a.m. – 3:30 p.m.

TUITION & CREDITS:

\$1,980 covers tuition and fees for 12 credits:
(8 cr. Anth 493: Anthropological Field Experience
and 4 cr. Geog 493: Geography Field Experience)
(*Partial tuition/credits possible; contact instructor*)

TRANSPORTATION:

Provided daily to and from Ellensburg campus.

HOUSING:

Available in Ellensburg. For information contact the primary instructor.

ENROLLMENT:

By permission only. Enrollment limited to 24.

TO APPLY:

Download application form at Web site and submit by May 1, 2008 (by April 1 for \$100 savings). Later submissions will be considered on a space-available basis. If accepted, registration materials will be sent.

PRIMARY INSTRUCTOR & CONTACT:

Patrick Lubinski, Ph.D. (archaeology)
Department of Anthropology, CWU
(509) 963-3601 • lubinski@cwu.edu

ADDITIONAL INSTRUCTORS:

Bax R. Barton, M.Sc. (paleontology)
Burke Museum, University of Washington

Karl Lillquist, Ph.D. (geomorphology, stratigraphy)
Department of Geography, CWU

Morris Uebelacker, Ph.D. (geography)
Department of Geography, CWU



CENTRAL WASHINGTON UNIVERSITY

Your future is Central.

Office of Continuing Education
400 E. University Way, Ellensburg, WA 98926-7433
Phone: (509) 963-1504 • (800) 720-4503
Email: summer@cwu.edu
CWU is an AA/EEO/Title IX Institution. TDD (509) 963-2143

Transportation Archaeologist Position Posted at DAHP

Class Title: Transportation Archaeologist (Permanent Position)
Location: 1063 S. Capitol Way, Suite 106, Olympia WA 98501
Salary: Range 58: \$48,396 (\$4,033 per mo.) to \$63,468 (\$5,289 per mo.)
Full medical, dental, and retirement benefits.
Posting Date: March 1, 2008
Closing Date: Until filled.

DUTIES: The Department of Archaeology and Historic Preservation (DAHP) is seeking a full-time, permanent staff archaeologist. The selected candidate will be responsible for reviewing undertakings and archaeological reports pursuant to Section 106 of the National Historic Preservation Act of 1996 (as amended) the State Environmental Policy Act, and Executive Order 05-05, for all transportation related projects in Washington State. The candidate will represent DAHP in meetings, planning sessions, and field visits regarding transportation projects. They will work closely with various federal, state, local transportation agencies, and affected Indian Tribes. This position is expected to travel 40% of the time, and includes field visits.

SPECIAL REQUIREMENTS: Eligible applicants must meet the Secretary of the Interior's standards for professional archaeologist, including having a Master's degree with major emphasis in Archaeology or Anthropology, two years of experience, one year of which must be professional archaeology field experience which includes project management, testing, and evaluation of archaeological sites, and archaeological lab experience. The applicant must also have experience reviewing large construction projects. A doctorate degree will substitute for one year of experience, but not for the specialized experience (underlined above).

A Washington State Driver's License is required.

Contact Information:: For more information regarding the position profile, please contact Allyson Brooks, State Historic Preservation Officer, 360-586-3066, email address allyson.brooks@dahp.wa.gov

Who May Apply: This recruitment is open to anyone who meets the minimum qualifications for the Transportation Archaeologist. The state of Washington is an equal opportunity employer.

How To Apply: Send a completed Washington State Application form and your curriculum VITA to:

*Department of Archaeology & Historic Preservation
PO Box 48343. Olympia WA 98504-8343*

(or physical address)

1063 S. Capitol Way, Suite 106

Olympia WA 98501

Phone: 360-586-3065

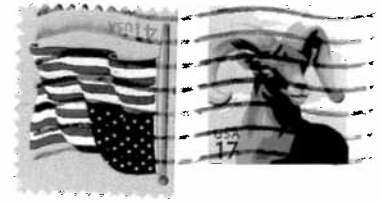
Email: zee.hill@dahp.wa.gov

Initial screening will be based solely on the information contained in your application and curriculum VITA. You should keep a copy of your application and any attachments, as they will not be returned.



Association for Washington Archaeology

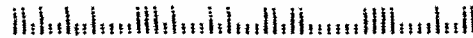
c/o Curator of Archaeology
Burke Museum
Box 353010, UW
Seattle, WA 98195-3010



**Celebrating our 27th Year
1981-2008**

Burke Museum n/a
Archaeology Dept.
Box 353010, UW
Seattle, WA 98195-3010

981953010 8034



AWA Membership Application Form

Membership Category:		Dues for Year(s):	
<input type="checkbox"/> Renewal	<input type="checkbox"/> Regular \$25.00	<input type="checkbox"/> 2008	
<input type="checkbox"/> New Member	<input type="checkbox"/> Student \$18.00	<input type="checkbox"/> 2009	
<input type="checkbox"/> Address Unchanged	<input type="checkbox"/> Associate \$10.00	<input type="checkbox"/> 2010	
<input type="checkbox"/> New Address	<input type="checkbox"/> Institutional \$20.00		
	<input type="checkbox"/> Donation \$ ____		

Name _____

Address _____

Phone _____

E-Mail _____

Send this form with payment to:
Association for Washington Archaeology
c/o Curator of Archaeology
Burke Museum
Box 353010, UW
Seattle, WA 98195-3010

Archaeology in Washington Journal Orders

Available Issues	Member Price
<input type="checkbox"/> Vol. 1-5 (SOLD OUT!)	
<input type="checkbox"/> Vol. 6 (includes articles on homesteads, microblades)	\$10.00
<input type="checkbox"/> Vol. 7-9 (SOLD OUT!)	
<input type="checkbox"/> Vol. 10 (includes articles on 45SJ414, stone "club")	\$10.00
<input type="checkbox"/> Vol. 11 (includes articles on 45PI43, Frying Pan Shelter)	\$10.00

Total: _____

Name _____

Address _____

Send this form with payment to AWA:
c/o Curator of Archaeology
Burke Museum
Box 353010, UW
Seattle, WA 98195-3010